

## Setting up CODE CR1500 Scanner for Rapid Tags as a Virtual COM Port

The instructions below will help you download and install the CODE Virtual COM Port Drivers and program your CODE Scanner. More information may be found on the Rapid Lab website: <http://rapidlab.com/scanner-and-software-support/>

### 1. Install the correct USB Virtual COM Port driver for your system:



- a. Visit the following link to see all products.  
<https://ww2.codecorp.com/downloads.php>
- b. Click on the correct product to view available firmware and software downloads.
- c. Scroll to the bottom of the page and check the agreement box for the correct firmware or driver and click on the download button.
- d. **Once the driver has installed, restart your computer.**

### 2. Reset the Scanner:

- a. **Unplug** the CODE CR1500 from the PC.
- b. **While holding the trigger** pressed, plug the reader into the USB port on the PC and hold for 5-10 seconds. You will hear 5 rapid beeps and then you can let go of the trigger. The unit is now in Boot Mode.
- c. Next, **hold the trigger down again** for approximately 5-10 seconds until it reboots. The reader will vibrate first and then beep several times and is now reset.

### 3. Reprogram the scanner:

- a. **Scan** the codes below to reprogram your scanner.

Required Codes:	
<p>Custom Settings</p>  <p>CC004482_03</p>	<p>Enable VCOM and Disable Data Formatting</p>  <p>CC004854</p>

Additional optional codes on the following page below.

## Optional Codes:

1. Continuous Scan On



M20224\_01

2. 1 Second Duplicate Scan Delay



M20230\_01

3. 3 Second Duplicate Scan Delay



M20232\_01

4. Disable Duplicate Scan Delay



M20229\_01

1. This code allows for continuous scanning on your CR1500.

2. This code creates a 1 second delay between scans.

3. This code creates a 3 second delay between scans.

4. This code disables duplicate scanning.

## Configuring Studylog® V3 with the CODE 1500 Scanner

The instructions below will help you setup Studylog V3 for use with the RapID Tag. More information may be found on the RapID Lab website:

<http://rapidlab.com/scanner-and-software-support/>

1. Make sure you have installed the USB Virtual COM Driver for your specific system correctly. If you have not set up your scanner for Virtual COM please view and follow the instructions for Setting up CODE CR1500 for RapID Tags as a [Virtual COM Port here](#).
2. Open Device Manager:
  - a. **Windows XP** - Click on Start and then Control Panel. Click on the Performance and Maintenance link. In the Performance and Maintenance window, click on the System icon near the bottom of the window. In the System Properties window, click on the Hardware tab. With the Hardware tab selected, click on the Device Manager button.
  - b. **Windows 7** - Click on the start menu and type 'Device Manager' into the search field. Hit Enter to open device manager.
3. Click on Ports (COM & LPT) to view the current Ports in use on your computer.
  - a. Take note of the USB to Virtual COM Port that is shown. See Figure 1 below for an example.

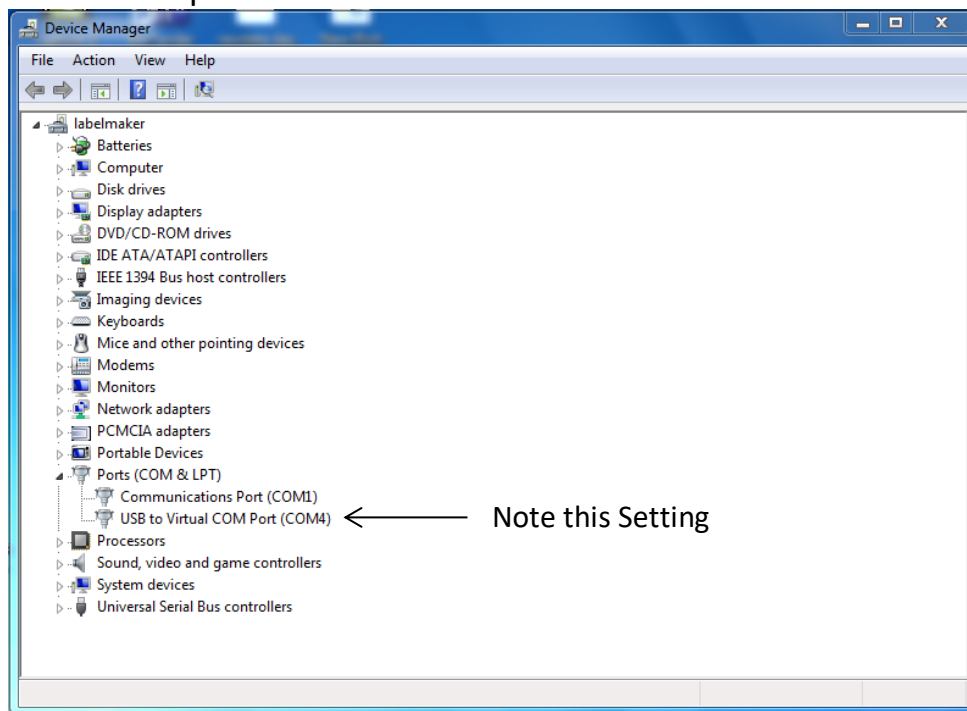
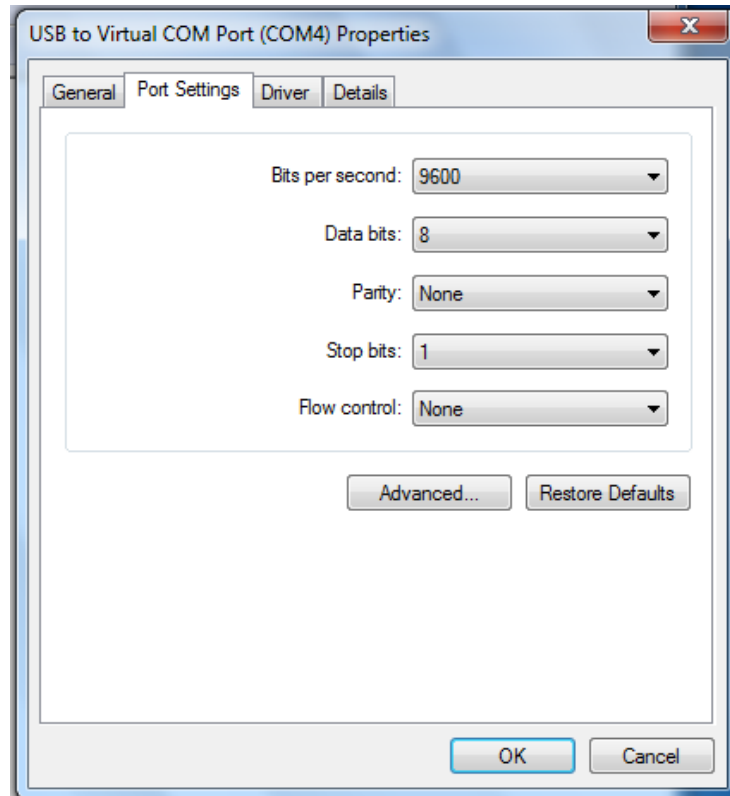


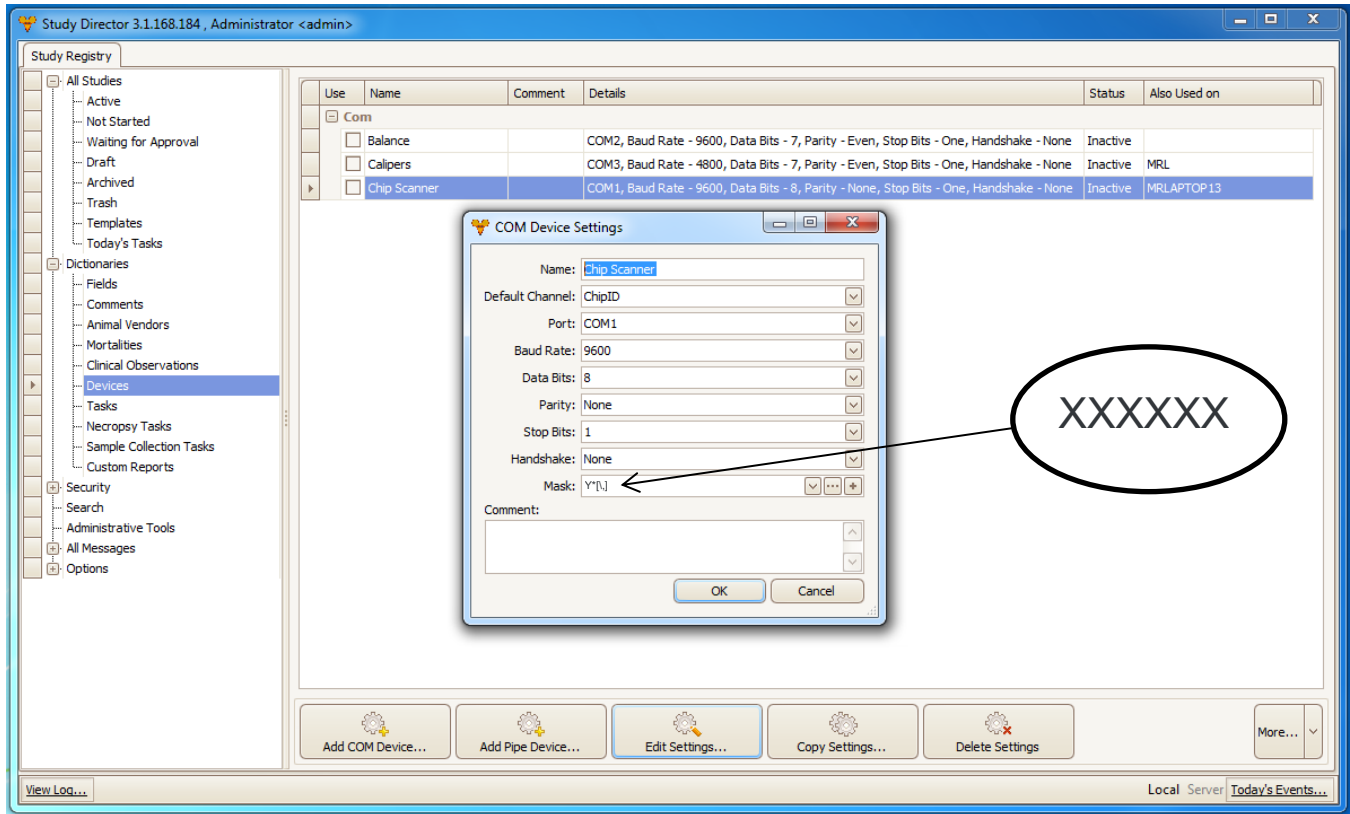
Figure 1: Device Manager

4. Double click on the 'USB to Virtual COM Port' Device and then select the 'Port Settings' tab as shown below in Figure 2.



**Figure 2: Port Settings**

5. Leave this window open
6. Plug in your scanner
7. If Study Director is already open, restart the program. Otherwise, start Study Director.
8. Once in Study Director, select Tools->Options from the menu bar.
9. Once the Options window opens, configure your scanner by setting up a new device as shown in Figure 3. Please note that your COM Port should match the setting from your Device Manager configuration shown in Figure 1 and may be different than shown in this guide. All other fields should be EXATLY as shown below.



**Figure 3: Device Manager**

10. Use the mask XXXXXX
11. Select 'Test device' and scan a Rapid Tag to verify that the scanner is working properly.
12. Click OK to close the Options window.