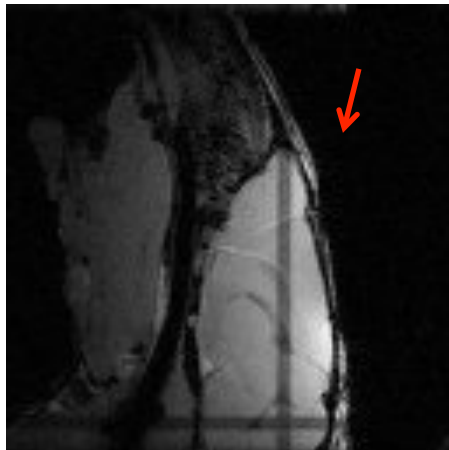




## MRI

- Images acquired using a 7T small animal system
- RapID tag taped on top of rat head between the eyes
  - Images shown below focused on orbital region (coronal) and center slice of brain (sagittal)
- Sagittal and coronal localizers run
- No artifacts seen



Sagittal



Coronal



# Rapid Tags<sup>®</sup>

Automated Lab Animal ID

## CT

- Images acquired using a small animal microCT system
- Rapid tag taped on rat shoulder
  - Orthogonal cross-section shown below
- Acquisition was 360 projections with 100  $\mu\text{m}$  resolution
- No artifacts seen

