

Setting up CODE CR1400 Scanner for RapID Tags as a Virtual COM Port

The instructions below will help you download and install the CODE Virtual COM Port Drivers and program your CODE Scanner. More information may be found on the RapID Lab website:

<http://rapidlab.com/scanner-and-software-support/>

1. Install the correct USB Virtual COM Port driver for your system:






- Windows XP (32 Bit)** - <http://codecorp.com/eulausbvirtualcomdriver.php>
- Windows XP (64 Bit)** – Not supported at this time.
- Windows 7 (32 Bit)** - <http://www.codecorp.com/downloads.php> (Scroll to Bottom of Page)
- Windows 7 (64 Bit)** - <http://www.codecorp.com/downloads.php> (Scroll to Bottom of Page)





2. Reset the Scanner:

- Unplug** the CODE CR1400 from the PC.
- While holding the trigger** pressed, plug the reader into the USB port on the PC and hold for 5-10 seconds. You will hear 5 rapid beeps and then you can let go of the trigger. The unit is now in Boot Mode.
- Next, **hold the trigger down again** for approximately 5-10 seconds until it reboots. The reader will vibrate first and then beep several times and is now reset.

3. Reprogram the scanner:

- Scan** the codes below to reprogram your scanner.

Required Codes:				
USB Virtual COM One Way Mode  M0005_01	Data Matrix Rectangle On  M0067_01	Data Matrix Inverse On  M0069_01	Enable improved reading capability for hard to decode Data Matrix symbols  M0071_01	Suffix - Comma  M0137_02

Optional Codes:		
Continuous Scan Both Imagers  M0127_02	Continuous Scan Off - Default  M0128_01	This turns the scanner into a continuous scan mode that works well for hands free operation. Note that the CR1400 will enter into Continuous Scan mode by default when placed in the Scanner Stand.
1 sec Duplicate Scan Delay  M0192_01	3 sec Duplicate Scan Delay  M0194_01	This sets a duplicate rejection period of 1 or 3 seconds so that tags are not 'double scanned'.

Setting up Studylog® V3 with the CODE 1400 Scanner

The instructions below will help you setup Studylog Study Director V2 for use with the RapID Tag. More information may be found on the RapID Lab website: www.rapidlab.com/support.

1. Make sure you have installed the USB Virtual COM Driver for your specific system installed correctly.
2. Open Device Manager:
 - a. **Windows XP** - Click on Start and then Control Panel. Click on the Performance and Maintenance link. In the Performance and Maintenance window, click on the System icon near the bottom of the window. In the System Properties window, click on the Hardware tab. With the Hardware tab selected, click on the Device Manager button.
 - b. **Windows 7** - Click on the start menu and type 'Device Manager' into the search field. Hit Enter to open device manager.
3. Click on Ports (COM & LPT) to view the current Ports in use on your computer.
 - a. Take note of the USB to Virtual COM Port that is shown. See Figure 1 below for an example.

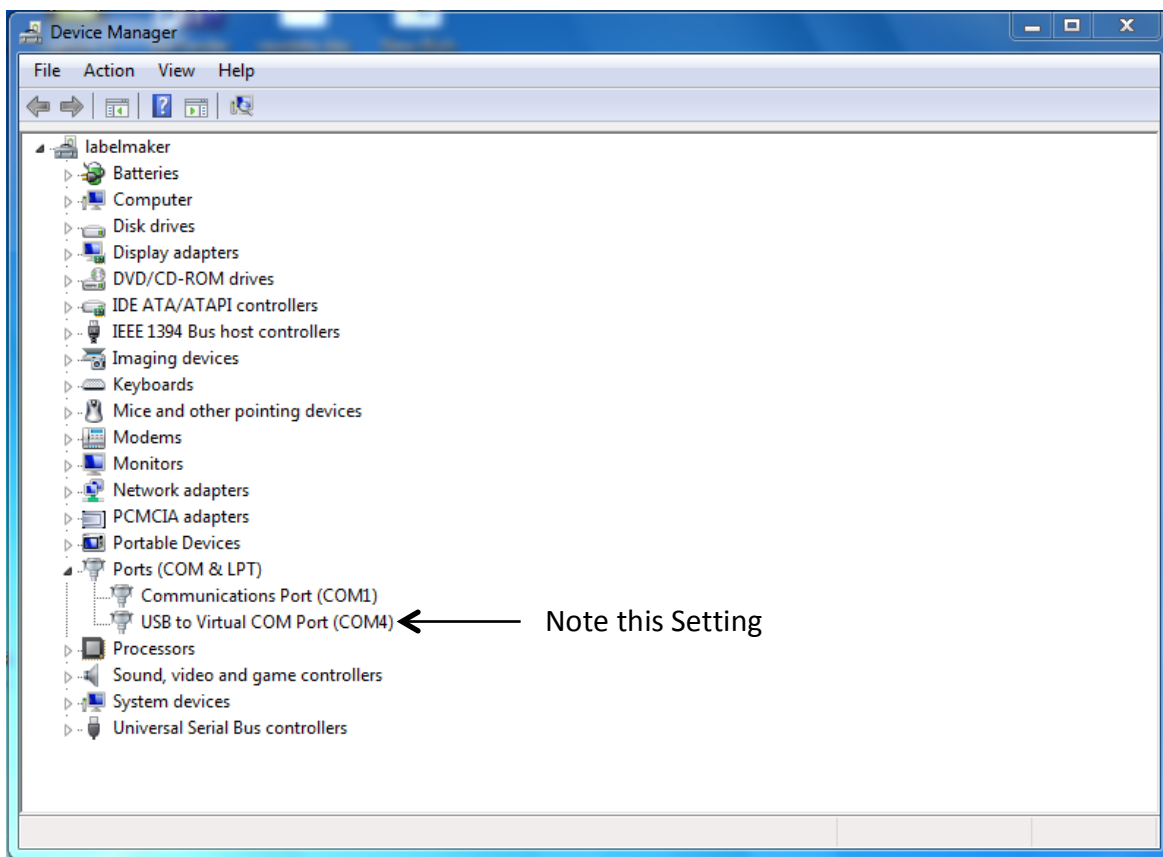


Figure 1: Device Manager

4. Double click on the 'USB to Virtual COM Port' Device and then select the 'Port Settings' tab as shown below in Figure 2.

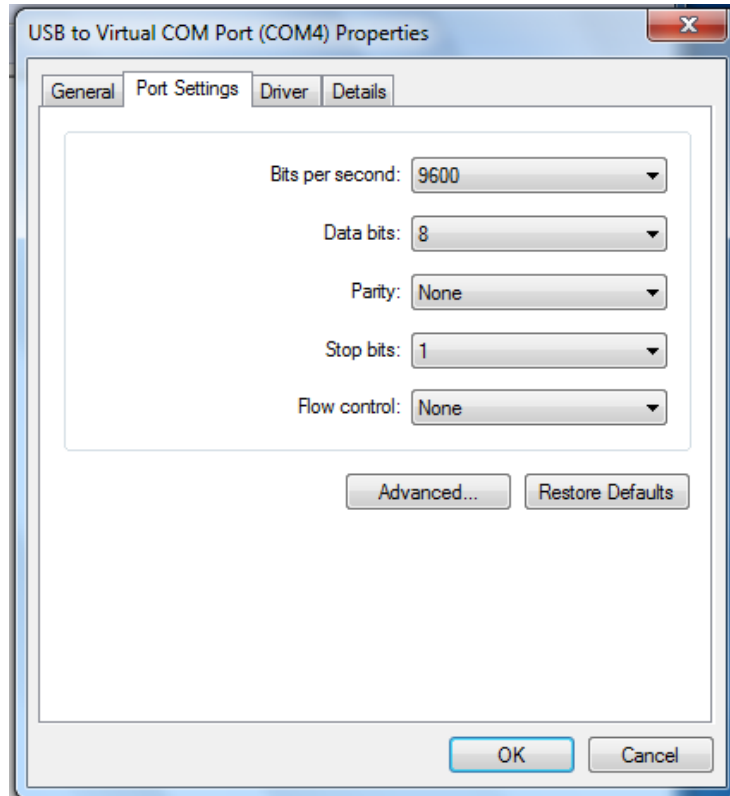


Figure 2: Port Settings

5. Leave this window open
6. Plug in your scanner
7. If Study Director is already open, restart the program. Otherwise, start Study Director.
8. Once in Study Director, select Tools->Options from the menu bar.
9. Once the Options window opens, configure your scanner by setting up a new device as shown in Figure 3. Please note that your COM Port should match the setting from your Device Manager configuration shown in Figure 1 and may be different than shown in this guide. All other fields should be EXATLY as shown below.

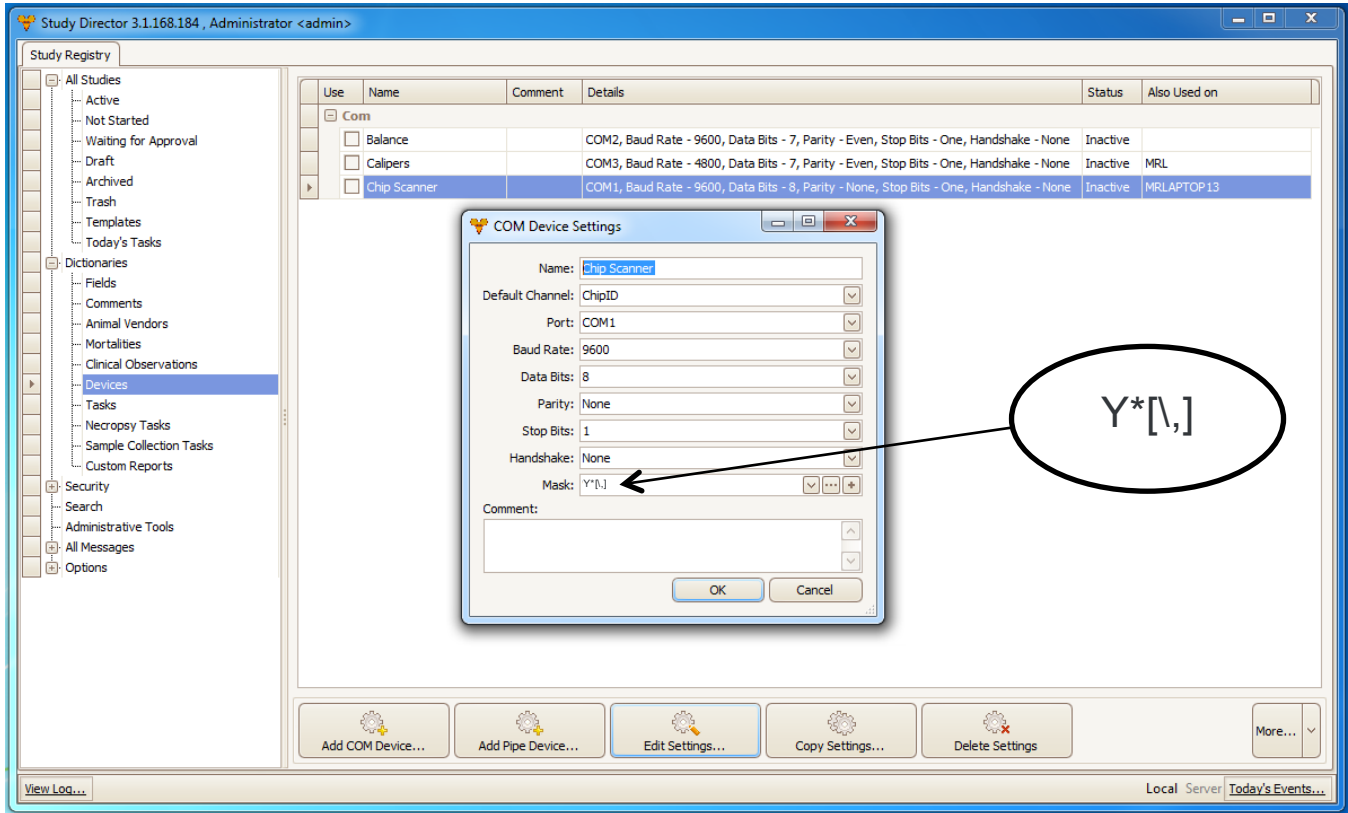


Figure 3: Device Manager

10. Use the mask Y*[\,]
11. Select 'Test device' and scan a RapID Tag to verify that the scanner is working properly.
12. Click OK to close the Options window.