

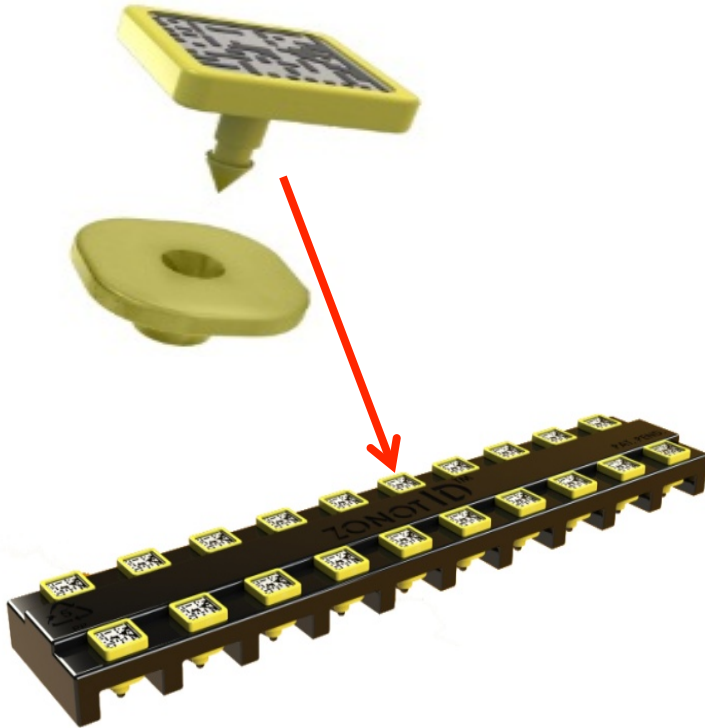
How To Use Rapid Tags[®]

Applying, Scanning & Removing



↓ Press Up or Down Arrow Keys to View Presentation ↑

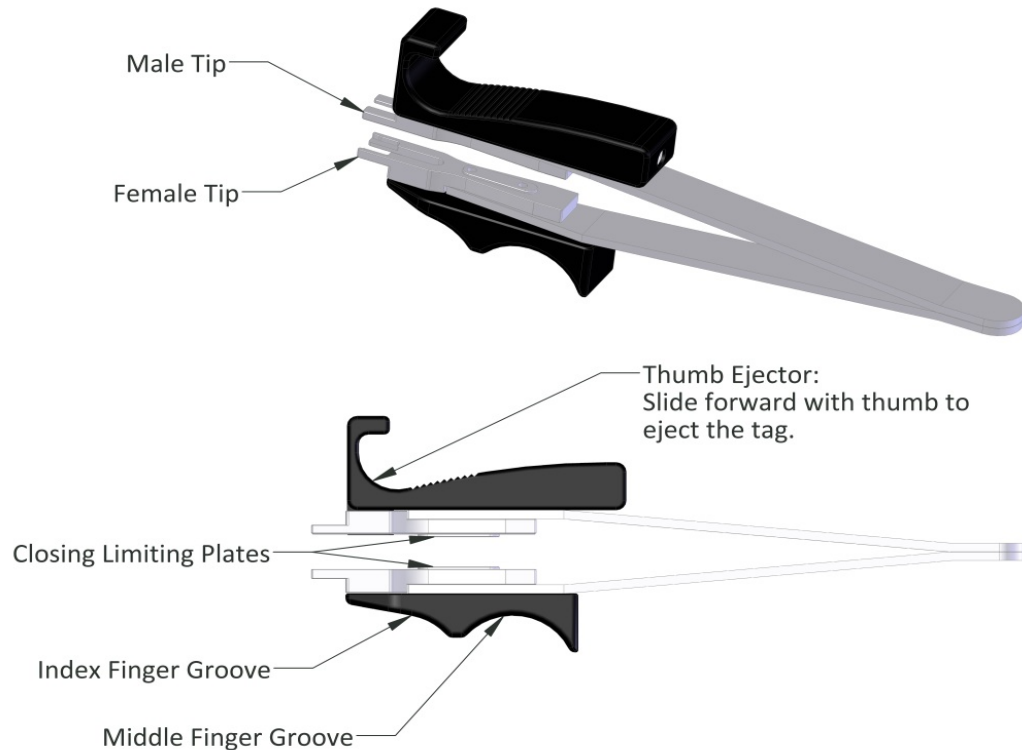
RapID Tag Packaging 101



- RapID Tags are mounted on recyclable trays – 20 tags per tray
- Each tray is comprised of the same color tags
- 10 trays (200 tags) are packaged to a box
- Each box includes 5 different colors - 2 trays, 40 tags, of each color

RapID™ Applicator - Description

The RapID Applicator is a precision, custom hand-tool designed to remove the RapID Tag from the tray and apply the tag to the animal's ear.

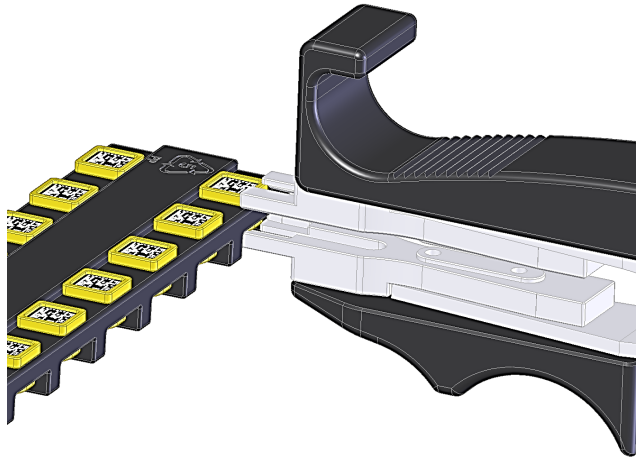


Materials: Stainless Steel & Acetal.
All Components are autoclave safe
at 121 degrees Celcius

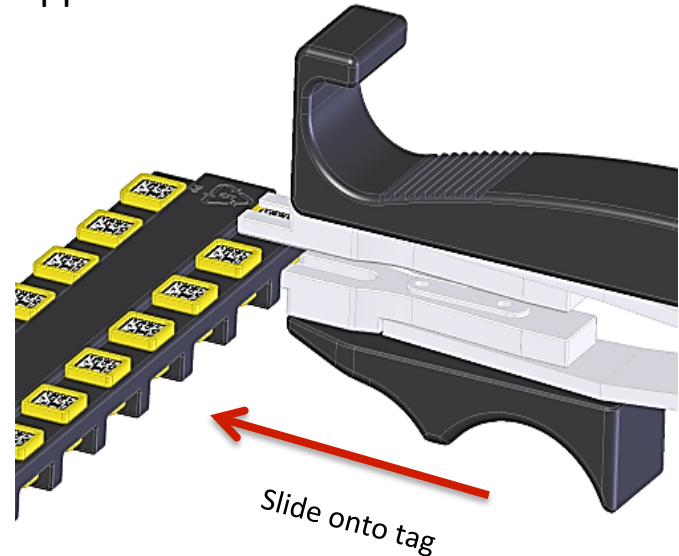
Loading the Applicator

Hold the applicator in your dominant hand while holding the tray in your other hand:

STEP 1) Gently *position* the tips of the applicator onto the edge of the male & female halves of the tag, then *close* with moderate pressure.

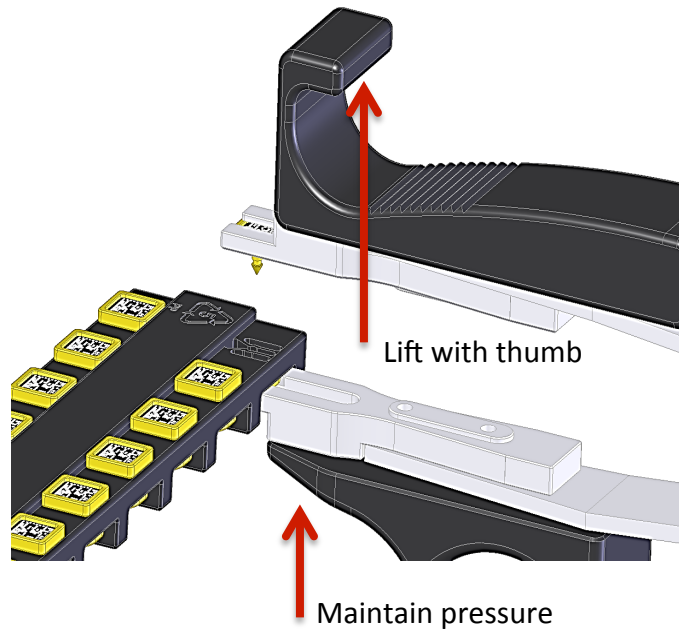


STEP 2) While maintaining moderate pressure, *slide* the applicator *fully* onto the tag using the palm of your hand to push against the end of the applicator.

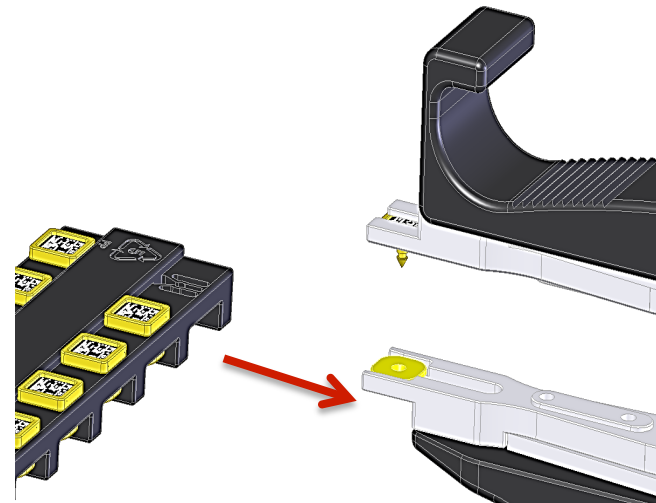


Loading the Applicator, cont.

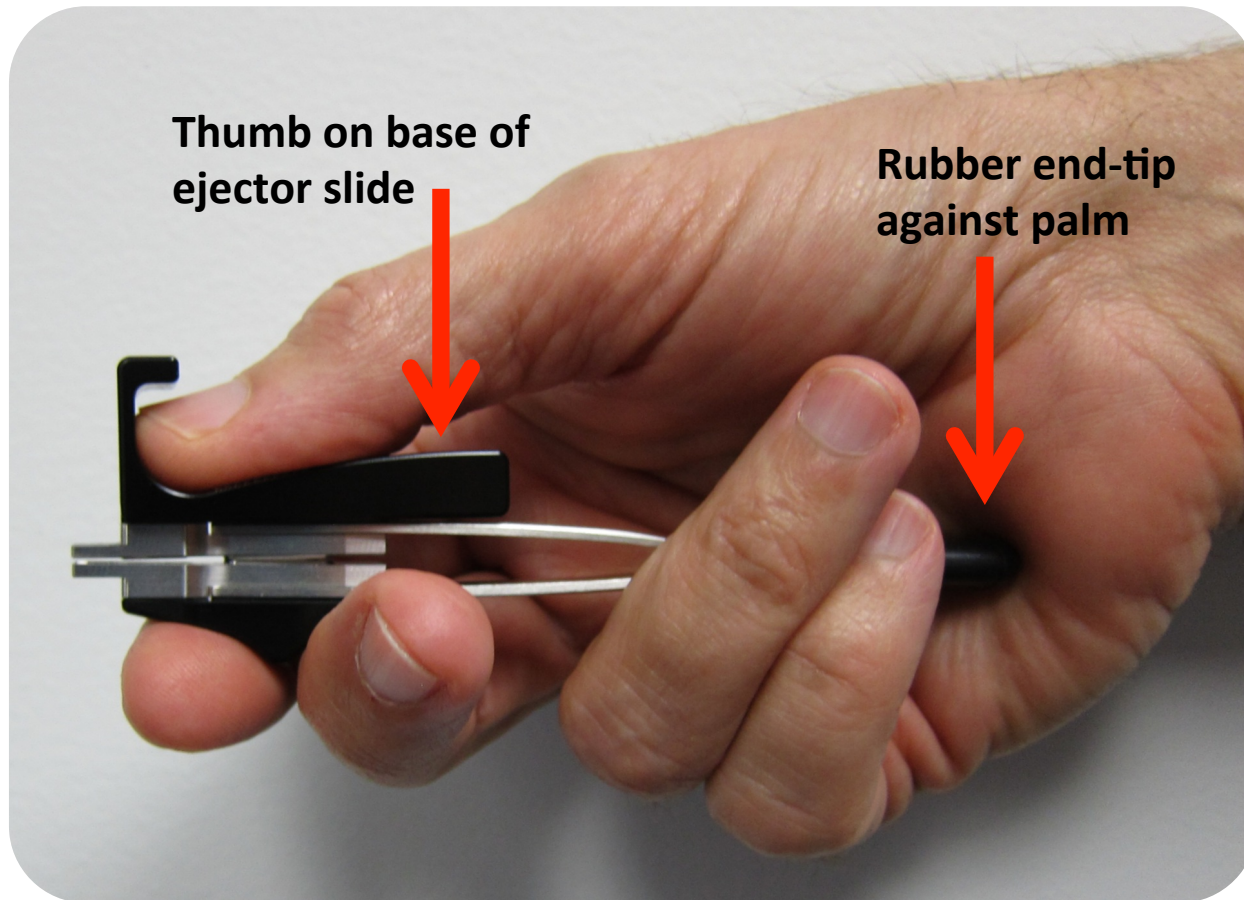
STEP 3) While maintaining pressure on the bottom (female) half of the tag, lift the male half up and out of the tray with your thumb.



STEP 4) Then carefully slide the female half of the tag and the applicator straight out of the tray.



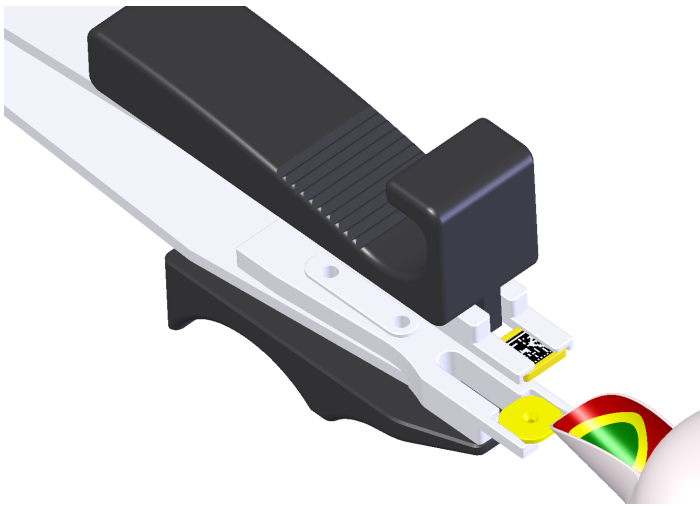
Correct 'Loading' Hand-Grip



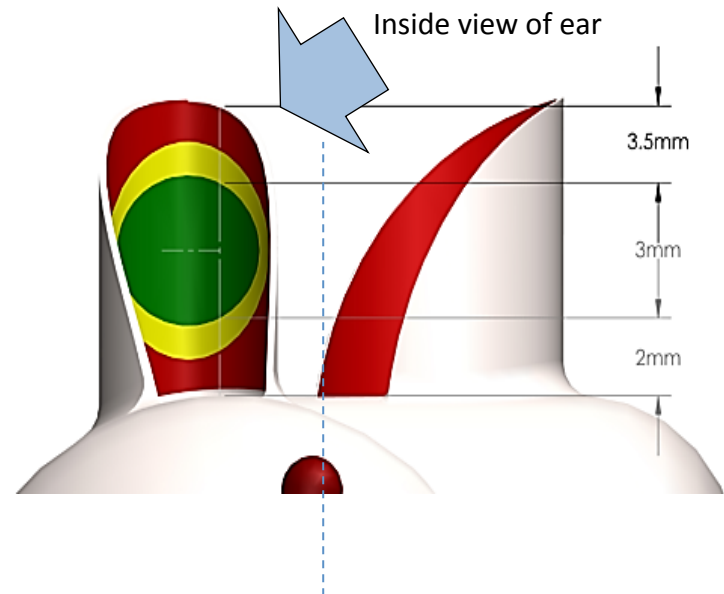
Applying Rapid Tags

Ensure the applicator is loaded correctly. Hold the applicator in your dominant hand while securing the animal in your other hand:

STEP 1) Locate the loaded applicator near the inside of the ear, with the male (barcode) half of the tag facing you.

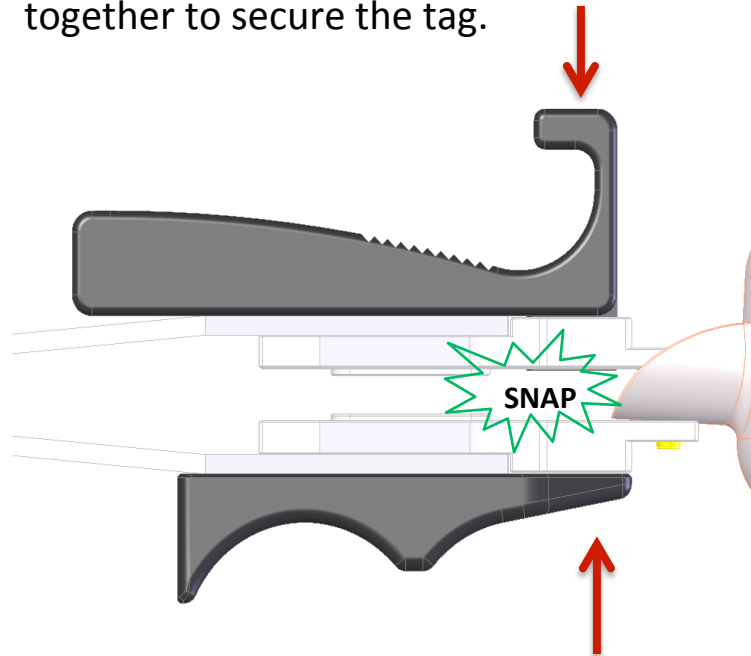


STEP 2) Position the male barb near the center of the green zone as shown above to enable easy scanning and maximum durability.

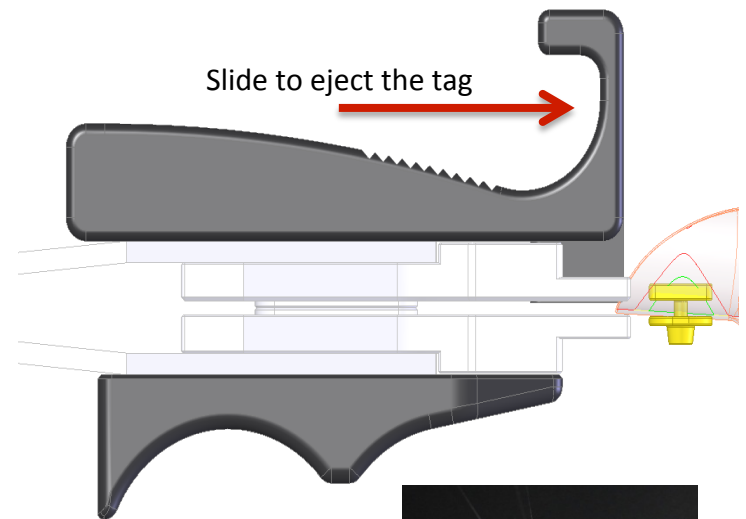


Applying RapID Tags, cont.

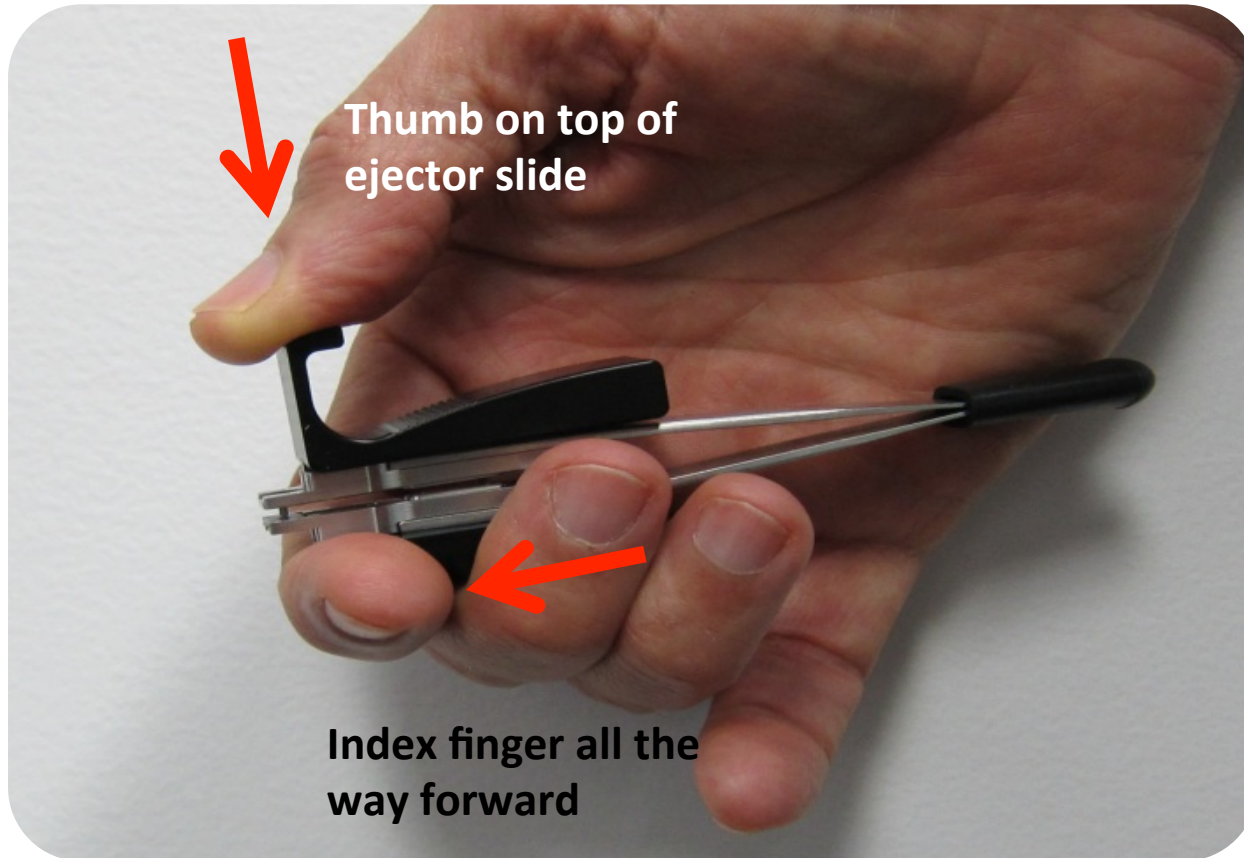
STEP 3) With the tag correctly positioned in the green zone, firmly and quickly press the applicator closed until it snaps together to secure the tag.



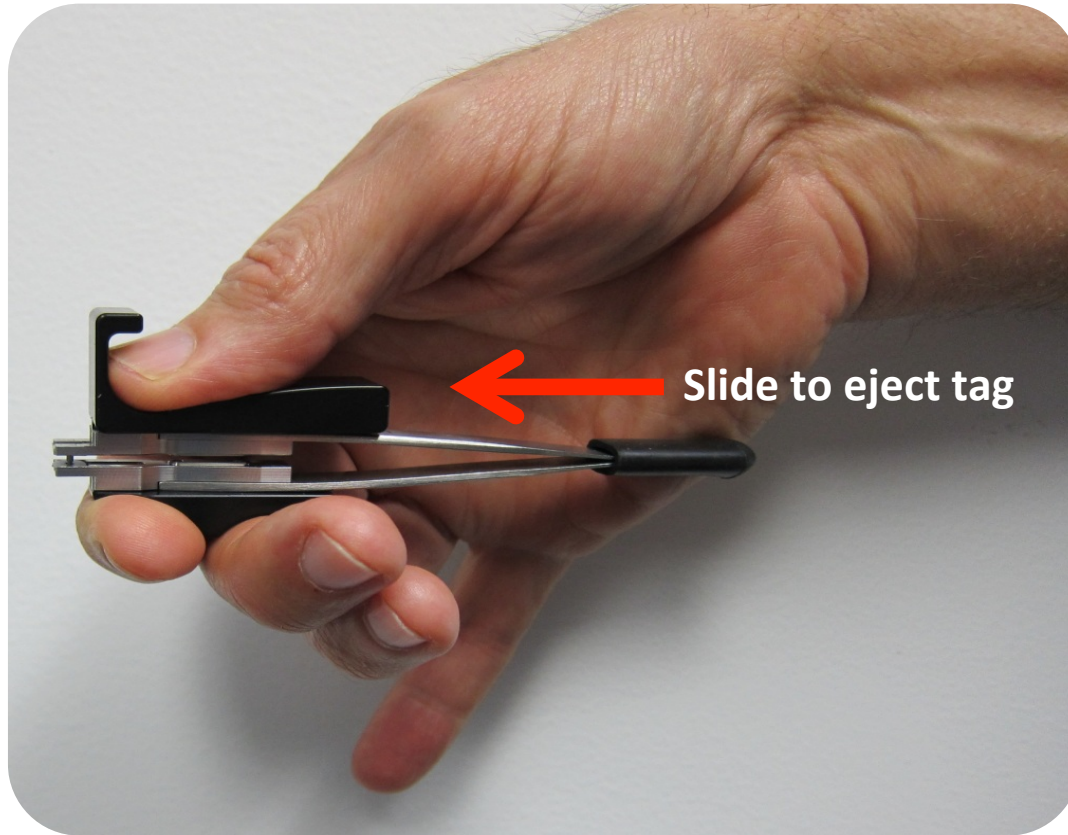
STEP 4) Then carefully eject the tag from the applicator by sliding the ejector forward with the thumb while releasing pressure on the applicator.



Correct 'Applying' Hand-Grip



Correct 'Ejecting' Hand-Grip



Scanning RapID Tags

Although RapID Tags work well with most industry scanners certified to read ISO/IEC 16022 Data Matrix Standard Codes, RapID Lab recommends using the Code CR 1400:

STEP 1) Use a scanner stand to free both hands.

STEP 2) Restrain the laboratory animal with one hand.

STEP 3) Use the other hand to ensure that there is nothing blocking the direct line of sight from the scanner to the RapID Tag barcode. Potential obstructions include fur, tissue, ear folds, etc.

STEP 4) Position the applied RapID Tag in the direct line of sight of the scanner and maneuver the tag into the scanner's optimal scanning zone. With the Code CR1400 scanner, use the built in blue targeting lights to find the best tag location for fast scanning.

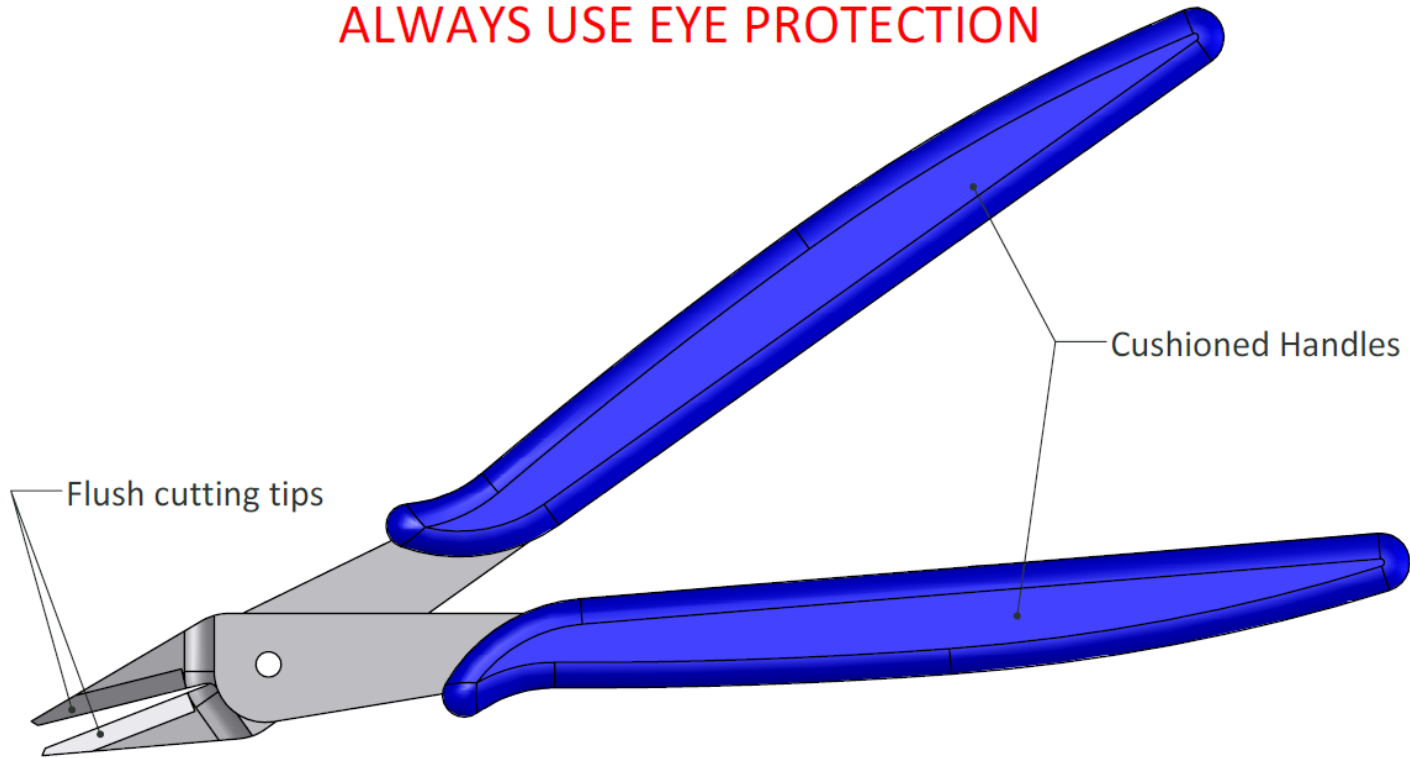
STEP 5) With the applied RapID Tag positioned correctly in the scanner's target zone, the identification 'ping' will be acquired within 1 second.



Code CR 1400 Scanner
(shown with stand)

RapID™ Removal Tool - Description

ALWAYS USE EYE PROTECTION



Removal tool is not intended for autoclave
but may be disinfected with alcohol.

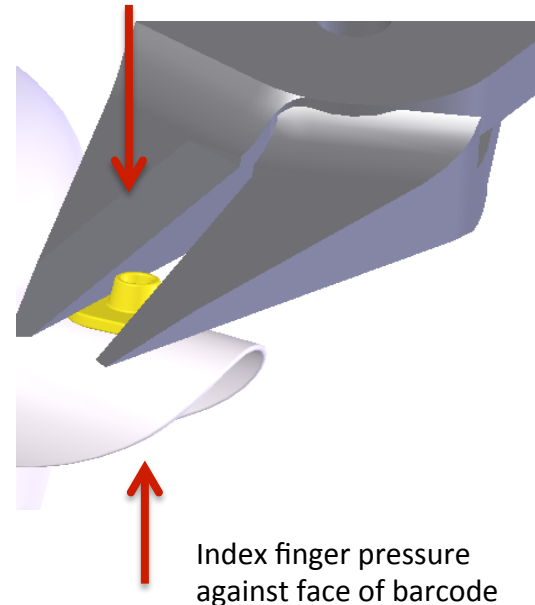
Removing Rapid Tags

To remove the Rapid Tag from the animal's ear using the Rapid Removal Tool:

STEP 1) Always use eye protection when using the Rapid Removal Tool!



STEP 2) Press the Rapid Removal Tool flush against the back of the female tag while applying opposite pressure with your index finger against the male (barcode) half.

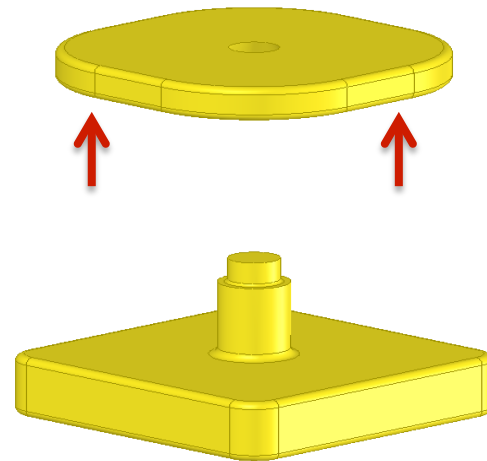


Removing RapID Tags, cont.

STEP 3) Make sure the removal tool is positioned correctly as shown in step #2.



STEP 4) Close the removal tool fully, cleanly cutting off the female cone. Carefully pull the tag apart, if required.



End Of Presentation

Please see the FAQ section of our website
for more information.